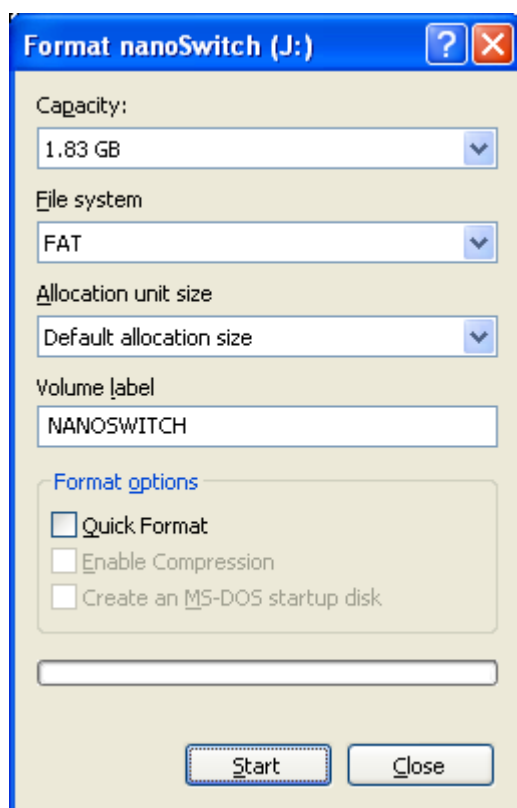


Rebuilding a C4025 nanoSwitch SD Card

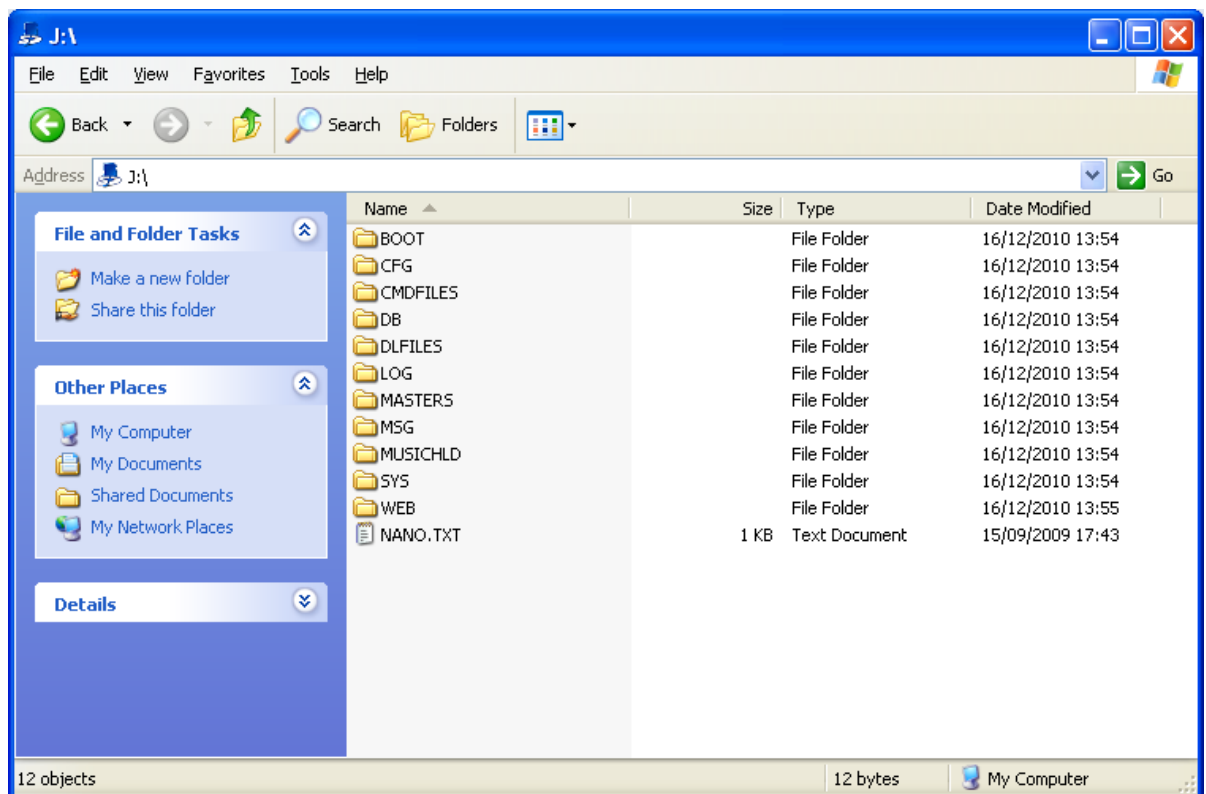
The following steps will need to be taken to reprogram the card.

1. Turn the nanoSwitch off and remove the SD card from the nanoSwitch.
2. Insert the SD card into the SD card reader on a PC
3. Open windows explorer and find the SD card – It should have the label “nanoSwitch” or “Secure Digital storage device”
4. Copy the contents of the “**BOOT**” and “**DB**” folder to a temporary folder on your computer. This is to backup the system configuration.
5. Right-hand click on the label and select “Format...”
6. The following dialog will appear. Make sure that the **capacity** is either **1.83GB** or 3.63GB as it is either a 2GB or 4GB card.



7. Set the volume label to “**NANOSWITCH**”
8. Click “**Start**”
9. Click “**OK**” on the confirmation dialog
10. Click “**Close**” after the format has been completed.
11. Copy the files from the zip file to the SD so that the folders BOOT,CFG,CMDFILES etc are in the root of the SD card

12. The SD card should look like this.



13. Copy the contents of the stored "DB" folder back onto the SD card. This will restore any special configurations.
14. Remove the SD card from the PC using the correct procedure (safely remove hardware, etc)
15. Insert the SD back into the nanoSwitch and turn on.

The BOOT folder is backed up just in case you need to return to the old software